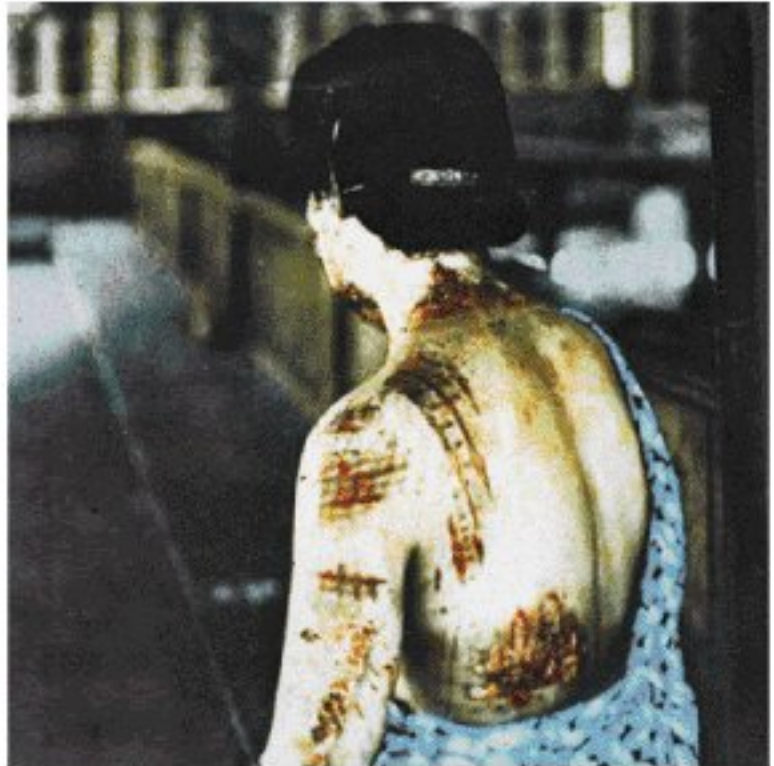


## Damage due to Heat Rays

When the A-bomb exploded, the temperature at the epicenter soared to over one million degrees centigrade. In one second, the fireball expanded to 0.2 miles (280m) in diameter. The heat rays emitted in all directions by the fireball brought temperatures on the ground near the hypocenter to 3,000 to 4,000°C.

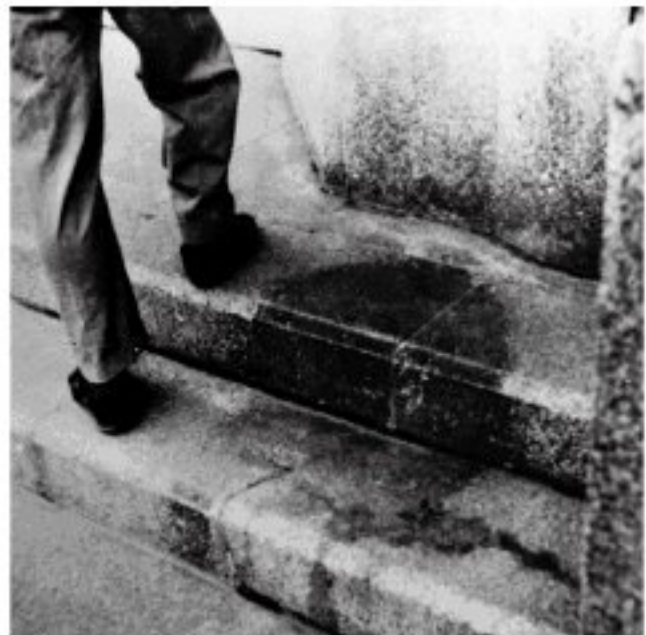
(Iron melts at 1,536°C)



▲ **Kimono pattern burned into skin (Hiroshima)**  
The heat rays burned the dark parts of the kimono pattern into her skin.



▲ **Shadow of a man and a ladder on a wooden wall**  
(Nagasaki, about 2.6 miles (4.4km) from the hypocenter)  
(Photo : Eichi Matsumoto)



▲ **Human shadow etched in stone**  
(Hiroshima, about 0.2 miles (260m) from the hypocenter)  
The heat rays burned the stone steps white. The place where a person was sitting remained dark.  
(End of 1946 – Photo : Yoshito Matsushige)